



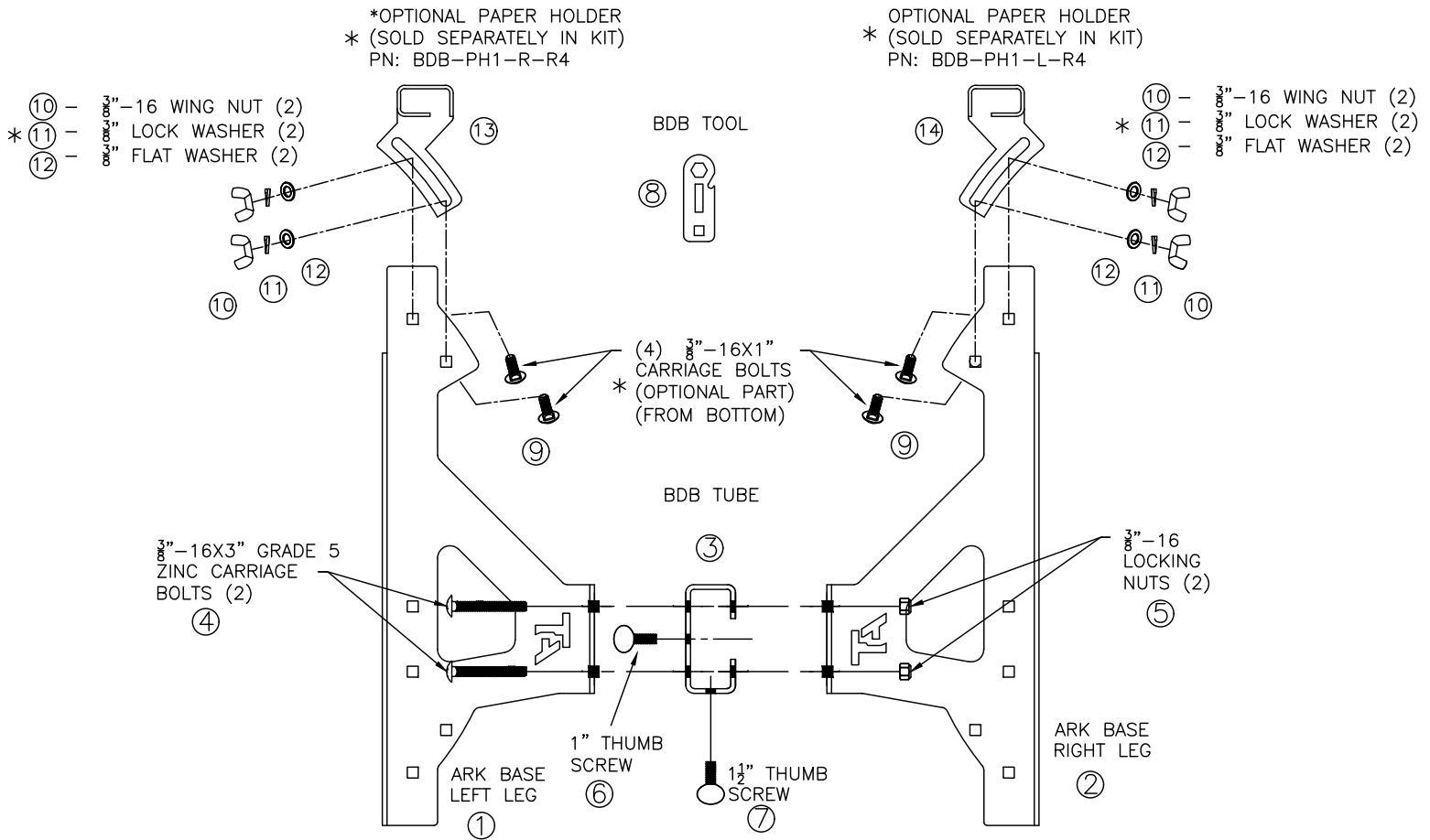
## TA Targets Genesis Target Base



The Genesis Family of targets are American manufactured AR500 target systems that serves as the gateway to get into steel target shooting. The Genesis line is available with a multitude of different target plate shapes and sizes. Installation of each plate is identical, and recommended calibers and distances are the same, regardless of the shape of the plate. **BEFORE SHOOTING: FULLY READ THIS MANUAL AND THE INCLUDED SAFE SHOOTING PAMPHLET WE INCLUDE WITH EACH SHIPMENT. ADDITIONALLY, READ THE STICKER ON THE BACK OF YOUR TARGET PLATE PRIOR TO SHOOTING. ALWAYS OBEY OUR SAFETY REQUIREMENTS. UNDER NO CIRCUMSTANCES SHOULD YOU ALTER OR MISUSE YOUR SYSTEMS. ALWAYS WEAR APPROVED HEARING AND SAFETY GEAR WHENEVER HANDLING A FIREARM.** As always, if you have ANY questions, please contact us via email **PRIOR** to using our products. The Customer Service email is [info@tatargets.com](mailto:info@tatargets.com). You may also call 1-833-746-4785 M-F during business hours. If questions **EVER** exist, cease use of your target until we can address your questions and/or concerns.

**\*BEFORE YOU BEGIN:** The Genesis line of targets features **DIFFERENT** caliber and distance ratings than our Exodus Line of Targets. Please **FULLY** read Genesis target manual prior to use.

**I.) Genesis Base Assembly: Note that SKU ARK-BASE ships UNASSEMBLED. Assembly prior to use is required. A Breakdown base tool is included to aid in assembly of this component. See diagram below.**



TOP VIEW OF ARK BASE ASSEMBLY PARTS

\* = NON-STANDARD OPTIONAL PART (NOT INCLUDED UNLESS ORDERED SEPARATELY)

(\* ) = Optional items that ARE NOT standard unless ordered separately

Hardware and Component Table. Verify ALL components are present before use!

Diagram	Description of Component	QTY
1	ARK Base Left Leg	1
2	ARK Base Right Leg	1
3	2X4 Tube For Post Insertion	1
4	3/8"-16 X 3" Carriage Bolts	2
5	3/8"-16 Locking Nut	2
6	3/8"-16 X 1" Thumb Screw	1

7	3/8"-16 X 1 1/2" Thumb Screw	1
8	Breakdown Base Tool	1
9	3/8"-16 X 1" Carriage Bolts (*)	4
10	3/8" Wing Nuts (*)	4
11	3/8" Locking Washers (*)	4
12	3/8" Standard Flat Washers (*)	4
13	Right BDB Paper Holder (*)	1
14	Left BDB Paper Holder (*)	1

- 1.) VERIFY that all necessary ARK base components are included. If ANYTHING is missing or misplaced, email us at [info@tatargets.com](mailto:info@tatargets.com) Prior to finishing setup and/or using the base.
- 2.) Find a flat place on your range. RANGE MUST BE LEVEL!
- 3.) Lay left leg, right leg, and 2X4 tube in the correct orientations as shown in diagram
  - a. Note orientation of the 2X4 base tube
- 4.) Slide 3/8" X 3" carriage bolts through left leg, 2X4 tube, and Left leg.
- 5.) Install 3/8" Locking nuts
- 6.) Torque to 15 ft/lbs.
  - a. For more permanent/robust installations, consider using a small amount of blue Loctite on both the nut and bolt. We do NOT recommend red Loctite.
- 7.) Install thumb screws into holes
  - a. 1" Thumb screw goes into side of 2X4 tube
  - b. 1 1/2" Thumb Screw into rear of 2X4 tube
  - c. Ensure the bolts are only STARTED to ensure a 2X4 can slide past
- 8.) Install 2X4 into base.
- 9.) Fully tighten rear thumb screw, ensuring post is FULLY pushed to the FRONT of the tube.
- 10.) Fully tighten side thumb screw. Ensure 2X4 is FULLY pushed to the SIDE of the tube.
- 11.) Install Top Bracket onto 2X4 with desired Target Plates.
  - a. Note: The ARK base will work with the Single Hole Bracket, Gen 5 A-DAP Bracket, AND the Mini Popper Bracket.
- 12.) Follow separate top bracket and target plate mounting instructions.
- 13.) Optional: Stake the target base down using the extra holes (Stakes can be purchased separately on our website).
- 14.) Optional: If you purchased paper holders separately with your base, you can install them onto the ARK base. Follow the Diagram for proper hardware orientation and necessary fasteners. Note: THE PAPER HOLDERS AND NECESSARY HARDWARE ARE NOT INCLUDED STANDARD WITH THE ARK BASE. IF YOU DESIRE THE PAPER HOLDERS YOU MUST ORDER SEPARATELY.

### **III.) Alternate method for using ARK Base:**

In addition to the standard assembly, users can assembly (as shown in below photos) AND utilize our paper holders for mounting smaller paper targets, like our FREE 8.5X11 targets found on our site. Please Note: You should NOT use the base in this configuration for steel target use, only smaller paper targets. See Below Photos:



### **IV.) Steel Target Compatibility:**

It is important to note that the Genesis Base was ONLY designed for use with the Single Hole Genesis Gong Mount and Genesis Target Plates. It is NOT designed to function with our A-DAP Steel Target Plates. The Genesis Base CAN be purchased with paper holders for USPSA

cardboard targets. IF you purchased paper holders, you could use this base for your paper targets. Please see previous page for paper holder assembly instructions. The Base should ALWAYS be set on flat, level ground. Additionally, stakes may be used to keep your target system stable.

### **Expected wear and tear during use:**

Over time it is normal to experience wear and tear on your system. This is expected. During normal use you may see:

- Chipped Powder coat or paint
- Worn out hardware/nuts/and bolts
- Edge chips from close edge impacts
- Chips around UNUSED holes (extra square holes) on target plates
- Worn out 2X4 posts
- Surface deformations on strike plate (OK to use unless craters with a depth of 1/8" or more exist)

Please note: Each Genesis system is guaranteed to arrive and be in working condition/working order. Normal wear and tear / expected wear and tear is always excepted from ANY warranty claims. The Genesis system when purchased as a complete system features a 1-year limited warranty.

Gongs purchased separately (without one of our complete Genesis systems) have a 30 day manufacturer's warranty. For full information on our warranties, please see our website at:

<https://tatargets.com/warranty/>

Further: The Genesis Base is NOT a steel target. DO NOT SHOOT YOUR BASE. Rounds Impacting the Genesis Base WILL damage components. The Genesis Base is made from standard steel and is NOT armored. The good news: All components are replaceable if something gets damaged.

### Maintenance Considerations:

The Genesis Base is fully serviceable. If you are missing components or have damaged components, please reach out to our customer service team for replacement parts OR check our website for replacement parts and components. During use with steel targets it is NORMAL to see chipping of the powder coat on the bases and top brackets. If you desire to touch up your base, you can purchase spray paint on our website.

If you have any other questions, please feel free to email our team and we'll be able to further assist you with setting up your new target system.

Customer Service Email: [info@tatargets.com](mailto:info@tatargets.com)

TA Targets

PO Box 212

Womelsdorf, PA 19567