



TA Targets Rifle Dueling Tree Instructions



The Rifle Dueling Tree is a robust and simple to use system. We offer it in three different variations:

Main Product SKU	Paddles	Base
RDT-316-BDB	3/16" Rimfire Paddles	Breakdown Base with Extension
RDT-38-BDB	3/8" AR550 Paddles	Breakdown Base with Extension
RDT-12-BDB	1/2" AR550 Paddles	Breakdown Base with Extension
RDT-316-26G2	3/16" Rimfire Paddles	26" Gen 2 Round Base
RDT-38-26G2	3/8" AR550 Paddles	26" Gen 2 Round Base
RDT-12-26G2	1/2" AR550 Paddles	26" Gen 2 Round Base



The paddles in the picture (right) are as follows: 1/2" AR550 (Left), 3/8" AR550 (Middle), and 3/16" Rimfire (Right).

It is important to note which paddles you have purchased. The paddles look similar at a glance, but are distinctly different sizes and thicknesses/weight. Please always make sure you are using the correct paddle for your application. More information is provided later in this manual. READ THIS ENTIRE MANUAL PRIOR TO USING YOUR DUELING TREE. User assumes all risks with the shooting activities they are embarking on.

A few important safety notes:

- ALWAYS follow our safe shooting guidelines
- ALWAYS be sure to operate on a safe and approved range.
- ALWAYS be sure you are using your targets and firearms properly.
- ALWAYS wear required personal protective equipment (eye protection, ear protection, proper clothing, etc.)
- ALWAYS be sure that your targets are stable and set up in the proper manner.
- ALWAYS BE CERTAIN WHAT IS BEYOND YOUR TARGET. Missed rounds that are not FULLY captured by a backstop can cause serious property and personal injury including death. It is YOUR responsibility to ensure safe shooting conditions.
- Under NO circumstances should you misuse your steel targets or shoot on a range lacking proper backstops.
- Prior to using this product, you MUST read our safe shooting guidelines. YOU are responsible to ensure you use this product properly and in a safe manner.
- Always assume metal and wood target components are sharp. Handle with working or leather gloves only
- Always assume lead is present. Wear protective gear and ALWAYS wash hands after handling any target component.
- This is NOT a full safety disclosure statement. read our safe shooting and target wear and tear manuals PRIOR TO ENGAGING IN STEEL TARGET SHOOTING ACTIVITIES.

What is included with each Dueling Tree:

- (one) Laser Cut/Welded Upright Assembly housing the gussets for the paddles (RDT-U)
- (Six) Paddles Per Your Order
 - o 3/8" Paddles for centerfire pistols and LIGHT Rifles – Or –
 - o 1/2" Paddles for calibers like 308 Winchester or 6.5 CM – Or –
 - o 3/16" Paddles for 22 Long Rifle Rimfire Rounds
 - o Note: You CAN order paddles separately during checkout or at a later date if desired.
- (One) Base (You selected which base you desired at checkout
 - o Option 1: Breakdown Base with Extension
 - o Option 2: Welded Round 26" Inside Diameter Target Base
- All Hardware Necessary for Assembly
 - o See Breakdown Base instruction manual for specific hardware included with each breakdown base: <https://tatargets.wpenginepowered.com/wp-content/uploads/2023/04/TA-TARGETS-SINGLE-BREAKDOWN-BASE-MANUAL.pdf>
 - o See Breakdown Base Extension instruction manual for specific hardware included with each extension: <https://tatargets.wpenginepowered.com/wp-content/uploads/2023/09/BDB-30-R1-BASE-INSTRUCTIONS.pdf>
 - o NOTE: 26" Welded Base does NOT require base assembly prior to use. This base ships assembled.

A Few General Points to Remember:

- *The Rifle Dueling Tree is a VERY heavy system. Two people are required for setup to avoid injury or dropping of product.
- **Each paddle, regardless of the thickness, installs in the same manner into the welded upright gussets
- ***Paddles can create a pinch hazard. Keep children away from this system during setup and use. Always be sure fingers and body parts are CLEAR of the paddles and gussets when installing.
- ****Used Dueling Trees CAN have sharp edges from bullet impacts. ALWAYS assume your system will have sharp edges present and wear gloves when handling this system.

Setting up the Rifle Dueling Tree with the Breakdown Base:

- 1.) Take inventory of all components & be sure you have what you need.
- 2.) Assemble the Breakdown Base Per the Breakdown Base Instructions (Found online [HERE](https://tatargets.wpenginepowered.com/wp-content/uploads/2023/04/TA-TARGETS-SINGLE-BREAKDOWN-BASE-MANUAL.pdf): <https://tatargets.wpenginepowered.com/wp-content/uploads/2023/04/TA-TARGETS-SINGLE-BREAKDOWN-BASE-MANUAL.pdf>)
- 3.) Extension up with the six required holes on the breakdown base. It should look as follows:



Figure 1



Figure 2



Figure 3



Figure 4



Figure 5

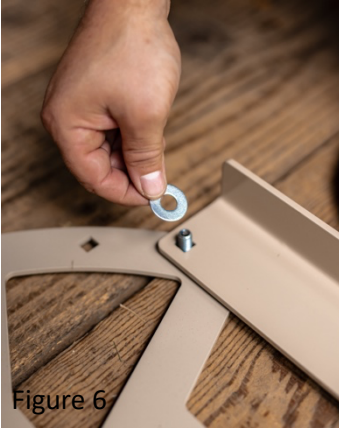


Figure 6

3A.) Insert all six Carriage bolts through the holes shown in figure 1.

3B.) Align the Extension over the six holes with the extension facing the FRONT of the breakdown base (as shown in figures 2-4)

3C.) Install the washers and wing nuts on the rear most bolts first. Install washer, then wing nut. Tighten hand tight until snug.

3D.) If no paper holders are to be used, install nut and washer to remaining bolts around base.

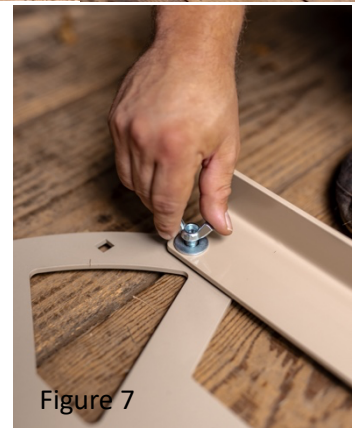


Figure 7

3E.) If you desire to install paper holders, simply place the paper holders over the front four bolts as shown here:

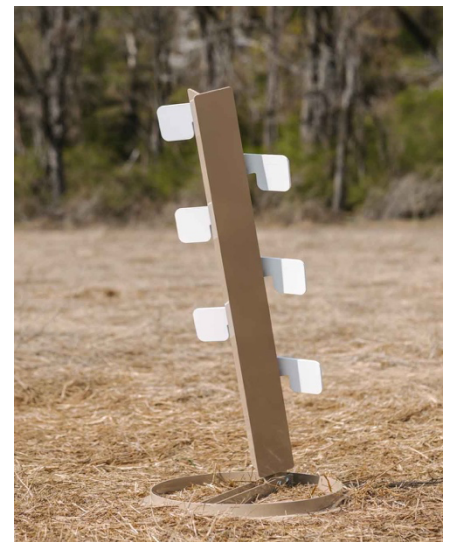
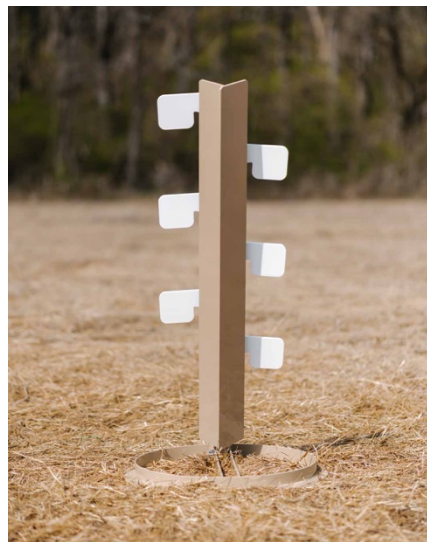


A note about the paper holders:

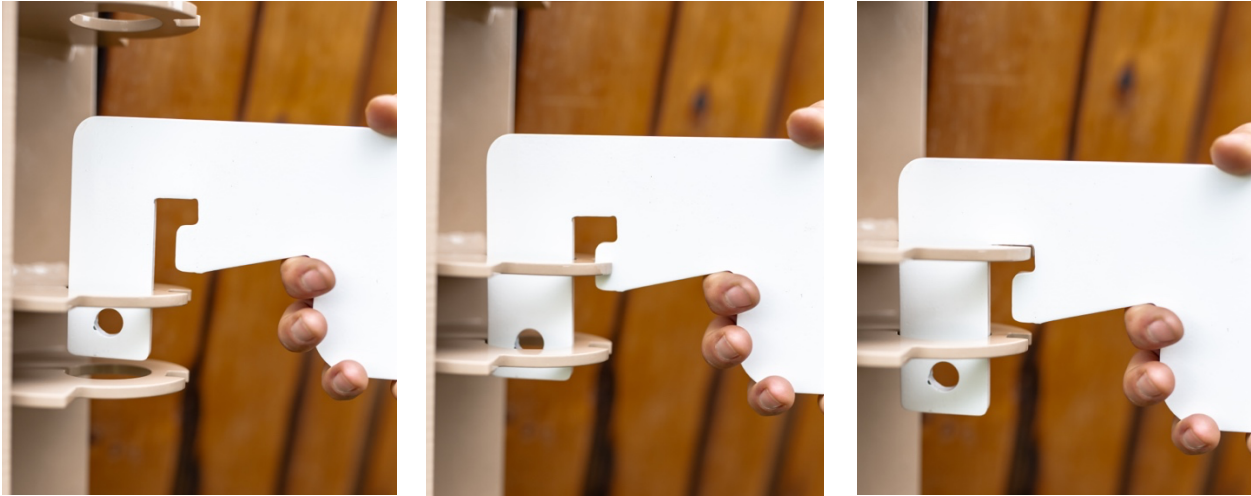
- Standard Paper holders for USPSA targets will mount on top of the extension as shown.
 - Extended paper holders will ALSO work with the extension but MUST be mounted BELOW the breakdown base/extension to clear the bent sides of the extension.
- 4.) At this point your breakdown base with extension is assembled.
 - 5.) Install the Welded Upright into the Breakdown Base with Extension Installed.
 - a. The Extension leg should be towards the FRONT of the system. The Dueling Tree leans forward, so the extra stability of the breakdown base extension is REQUIRED.
 - b. A Properly installed upright will be pushed FULLY forward toward the base tube and fully to the side. If your upright is loose or “wobbles” side to side with a light touch, it is not tightened enough into the base.
 - c. A loose upright can be unsafe and WILL lead to paddles not rotating properly/fully.
 - d. DUELING TREE MUST BE ASSEMBLED ON LEVEL GROUND. PERIOD.

Setting up the Rifle Dueling Tree with the 26” Welded Base:

- 1.) Take inventory of all components & be sure you have what you need.
- 2.) The 26” Welded base does not require additional assembly prior to use. It is ready to use out of the box.
- 3.) Set the 26” Round base on level, solid ground. Ensure that the base will be stable at the location you place it.
- 4.) Install the Welded Upright into the receiving tube for the 26” Round base. This process is identical to the Breakdown base.
 - a. The Rifle Dueling Tree installs towards the REAR of the base, leaving MORE of the base facing front. Installing the base backwards will result in tip overs and possible injury. See photos.
 - b. A Properly installed upright will be pushed FULLY forward toward the base tube and fully to the side. If your upright is loose or “wobbles” side to side with a light touch, it is not tightened enough into the base.
 - c. A loose upright can be unsafe and WILL lead to paddles not rotating properly/fully.
 - d. DUELING TREE MUST BE ASSEMBLED ON LEVEL GROUND. PERIOD.



- 6.) Install the Paddles into the Dueling Tree Upright
- ALL paddles install the same way regardless of size or thickness.
 - Paddles when inserted should line up with the keyway in each gusset.
 - After aligning the keyway, the paddles will simply drop into place.
 - Rotate each paddle side to side to confirm smooth paddle movement.
 - If there is binding or the paddles do not fit, please confirm proper installation.
 - If problems exist in fitment, take photos and send to us at info@tatargets.com. We will assist you further.



Care and Maintenance:

Prior to EACH AND EVERY Use, users should confirm the following:

- Paddles and welded upright are free of cracks, pits, or other damage
- Paddles rotate freely side-to-side without binding
- Base is fully assembled and all necessary bolts and nuts and washers are in place and tightened properly
- Upright is tightened properly in the base

Occasionally it may be advantageous to lubricate the pivot contact areas of the paddles. Any WD-40, chain lubricant, or other form of light oil lubricant or silicone will work fine.

As the system is used, the powder coat will chip wherever bullets or fragmentation meet the system. This is normal. Touch up paint can be purchased on our website if desired.

Proper Calibers, Ammunition, and Shooting Distances:

Our Dueling Tree for most people will be a lifetime target IF IT IS USED PROPERLY. All distance recommendations are determined with ammunition with a MUZZLE velocity of 3,000 FPS or LESS. Shooting ammunition faster than 3,000 FPS, even at distances listed below, will result in damage to your system. Other types of ammo are also prohibited from this system. These include: SS109, M855, M855A1, or any type of “penetrator” or “armor Piercing” ammunition. This includes extremely high velocity ammunition. Our warranties DO NOT COVER DAMAGE RESULTING FROM IMPROPER AMMO USE.

Caliber	3/16” Paddles	3/8” AR550 Paddles	½” AR550 Paddles
22 LR (Rifles and Pistols)	10 Yards	10 yards, but will not rotate	10 yards, but will not rotate
38SPL	Not Approved	10 Yards	10 yards, but will not rotate
380, 9mm, 40S&W, 45ACP, 10MM and Similar	Not Approved	10 Yards	10 Yards, smaller pistols will not rotate
357 Magnum, 44 Magnum, 45 Colt, 454 Casull	Not Approved	25 Yards, ½” Paddles are Recommended over the 3/8”	25 Yards
223, 5.45X39, 300 blackout, 7.62X39	Not Approved	50 Yards with proper ammo (3,000 FPS or LESS Muzzle Velocity)	30 Yards with proper ammo (3,000 FPS or LESS Muzzle Velocity)
12 Gauge Bird Shot (Lead ONLY, No steel or Tungsten)	Not Approved	10 Yards with Proper Lead Shot (No tungsten or steel shot)	10 Yards with proper lead shot. MAY not rotate paddles.
12 Gauge Buckshot	Not Approved	25 Yards with Proper Lead Buckshot (Up to 00 Buck)	25 yards with Proper Lead Buckshot (Up to 00 Buck)
12 Gauge Slugs (Rifled and Sabot)	Not Approved	100 Yards	100 Yards
308 Winchester / 6.5 CM	Not Approved	200+ Yards	100+ Yards
45-70 (And Similar)	Not Approved	100+ Yards	100+ Yards
6.5 PRC, 7mm PRC, 300 PRC, 300 win mag	Not Approved	Not Approved	200+ Yards
338 LM	Not Approved	Not Approved	300+ Yards
50 BMG	Not Approved	Not Approved	Not Approved

Wear and tear and proper ammunition:

Distance ratings with rifles are based upon a MUZZLE VELOCITY of 3,000 FPS OR LESS. For every 100FPS OVER 3,000 FPS Muzzle velocity, you MUST add 25 yards.

Note: Heavy jacketed lead core, exposed lead soft points, and lead hollow points have the potential to leave small impressions on steel targets. This is normal and should not cause concern. If you see impressions, simply increase distance 25 yards at a time until they stop. This is especially prevalent in heavy lever action, cowboy, and magnum revolver calibers.

Further Instructions:

- Safe Shooting: <https://tatargets.wpenginepowered.com/wp-content/uploads/2020/08/SAFE-SHOOTING-UPDATED.pdf>
- Target Wear and Tear: <https://tatargets.wpenginepowered.com/wp-content/uploads/2020/08/TARGET-WEAR-AND-TEAR-DOCUMENT.pdf>

Shooting Considerations:

Due to the nature of Dueling Trees and their swinging paddles, these systems should be set up approximately 10 yards from any other system. When a paddle is struck, most fragmentation will be directed towards the ground. However, there is still fragmentation that goes to the sides as the paddle rotates around. Keeping your Dueling Tree far enough away from other systems is required to ensure no secondary fragmentation can head in an unsafe direction.

Paddles can be engaged at any time during the rotation safely.

Backstops MUST be higher than the dueling tree to capture any missed rounds that occur.

The Shield of the Dueling Tree is NOT a target and it is NOT designed to be intentionally shot or impacted. Occasional glances will not cause damage. Repeated, intentional impacts will cause wear and tear over time that is not covered under our warranty.

Staking the Dueling Tree to the ground is optional, but it is recommended for maximum consistency. Stake kits can be purchased separately on our website.

Our Rifle Dueling Tree was built to last, but it has a lifespan just like everything man-made. By doing your part to follow these instructions, you are ensuring the longest lifespan possible out of your system. These instructions are critical in order to have a safe, fun, and productive experience with your new target system.

Note: The 26" Round Base, Breakdown Base, Base Extension and its components are NOT targets. DO NOT INTENTIONAL SHOOT NON-STRIKE FACE COMPONENTS. Do NOT shoot bullets at your Breakdown Base Or Round Base under any circumstances. Damage WILL occur and this can be dangerous.

If you have any other questions, please feel free to email our team and we'll be able to further assist you with setting up your new target system.

Customer Service Email: info@tatargets.com

All other information can be found: <https://tatargets.com/ta-targets-instruction-manuals/>