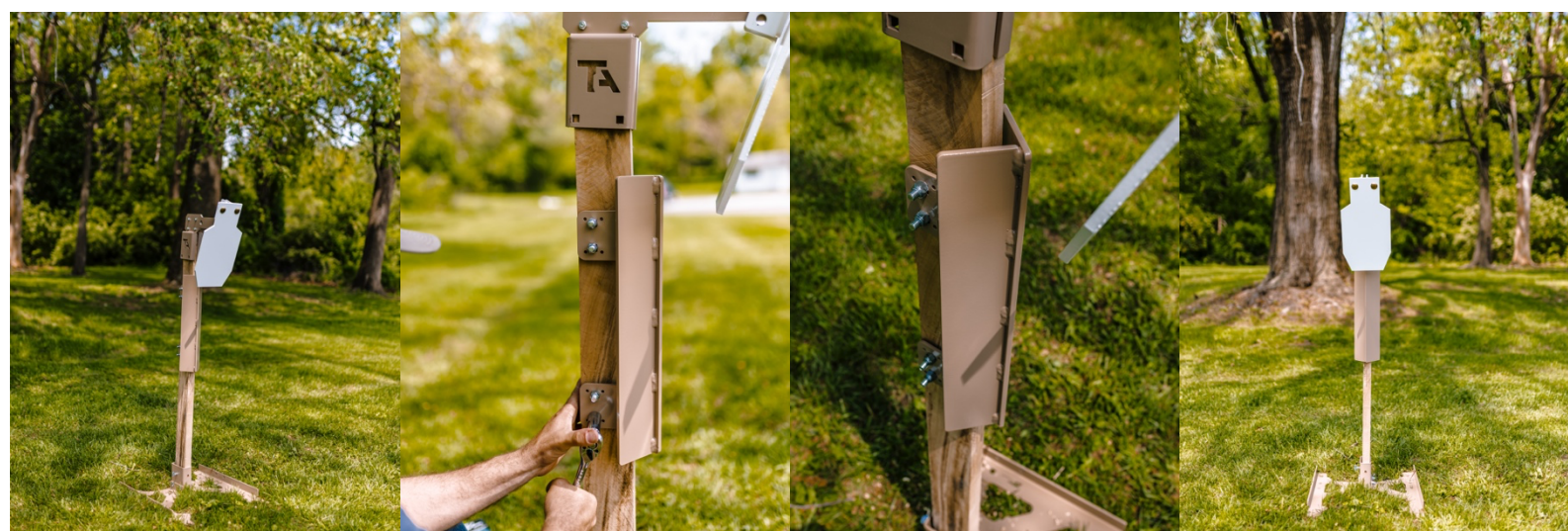




2X4 AR500 Armored Post Guard

Compatible with Genesis and Exodus 2X4 Post Systems



The Armored AR500 Post Guard (For 2X4 Wood Posts) is designed to increase the expected lifespan of your 2X4 post. This rugged, high quality solution keeps fragmentation from impacting the board. Additionally, the “V” shape deflects fragmentation and stray rounds away from you, the shooter. BEFORE SHOOTING: FULLY READ THIS MANUAL AND THE INCLUDED SAFE SHOOTING PAMPHLET WE INCLUDE WITH EACH SHIPMENT. ADDITIONALLY, READ THE STICKER ON THE BACK OF YOUR TARGET PLATE PRIOR TO SHOOTING. ALWAYS OBEY OUR SAFETY REQUIREMENTS. UNDER NO CIRCUMSTANCES SHOULD YOU ALTER OR MISUSE YOUR SYSTEMS. ALWAYS WEAR APPROVED HEARING AND SAFETY GEAR WHENEVER HANDLING A FIREARM. As always, if you have ANY questions, please contact us via email PRIOR to using our products. The Customer Service email is info@tatargets.com. You may also call 1-833-746-4785 M-F during business hours. If questions EVER exist, cease use of your target until we can address your questions and/or concerns.

***NOTE: The Armored Post Guard IS NOT A TARGET! NEVER intentionally shoot the post guard, or damage will occur. While it is possible to mount this post with simple Deck Screws, our recommended method is with the included 3/8” Carriage Bolts. This is a stronger mount method.**

****Lost Components:** During setup, tear-down and transport it is extremely important to make sure you do not lose any of your hardware or components. Always be mindful of how and where you tear down your base to reduce the risk of losing hardware or components.

I.) Installation with Deck Screws:

Note: Deck screws are the faster method of attachment, but they are not as strong as using the included 3/8" Carriage Bolts. Deck screws should be no longer than 1" or they will stick out the side of the board upon install.

Tools Needed for assembly:

- Hand Screw Driver (Phillips, Torx, or other depending on screws chosen)
 - o An electric Drill will be easier for installation.
- (8) 1" Long Deck Screws (We do NOT recommend Dry Wall Screws as they are prone to snapping) **(WE DO NOT INCLUDE DECK SCREWS)**

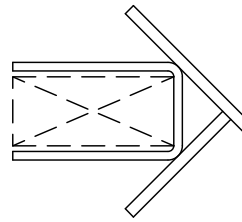
Safety Gear Needed for assembly:"

- Wear approved safety glasses
- Wear working gloves to protect hands from tools, screws, and other potentially hazardous items

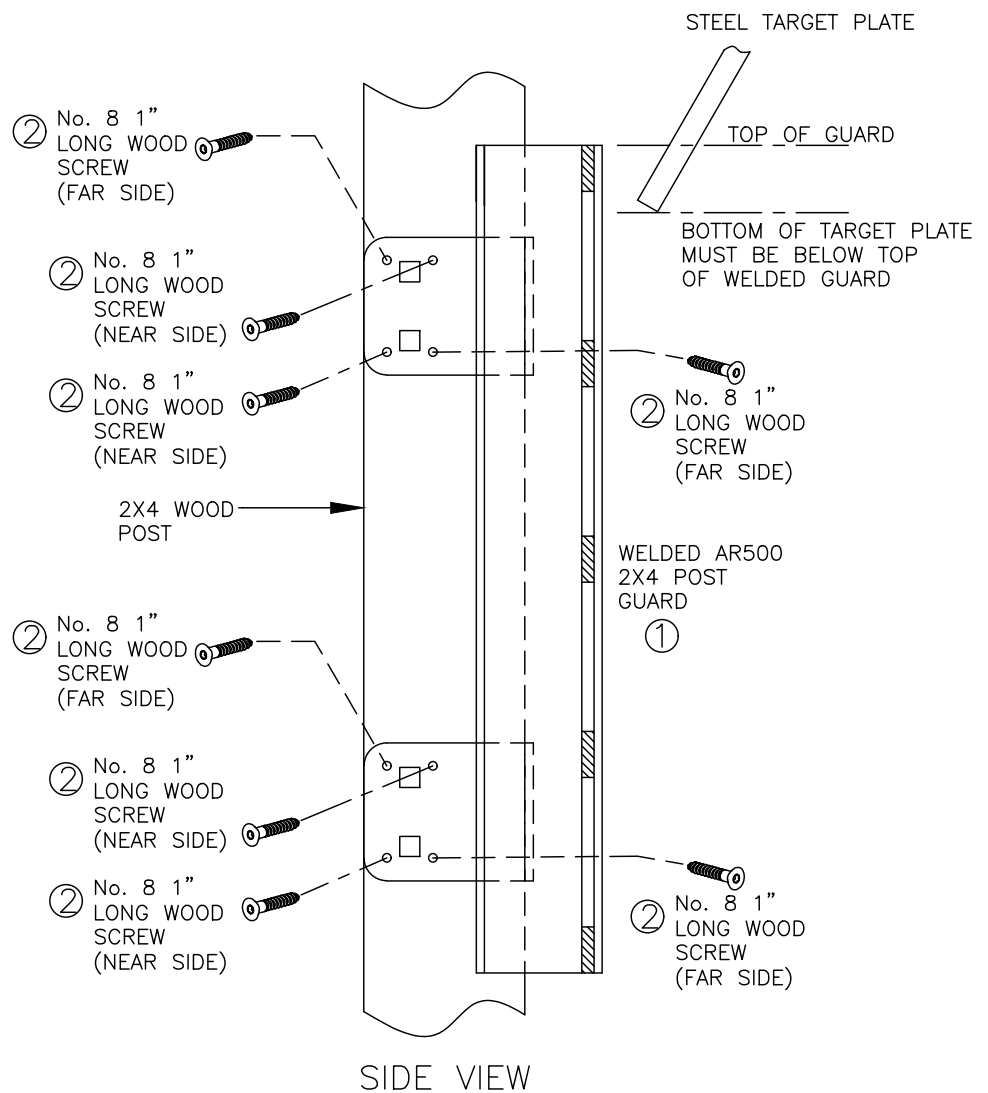
- 1.) Verify all components are present.
- 2.) Fully Set up your target system (Base, 2X4, and top bracket) per the instruction manuals for the system (See our website for ALL user manuals: <https://tatargets.com/ta-targets-instruction-manuals/>)
- 3.) Slide 2X4 Post Guard over the 2X4
- 4.) Make sure the 2X4 Post guard is above the bottom most portion of the target plate.
- 5.) Push Target Plate all the way against the post / guard. If the target plate is ABOVE the post, you need to slide the post UP further.
- 6.) Install your first screw into one of the holes in the top most bracket. Do not fully tighten.
- 7.) In a Diagonal pattern, install one more screw on the bracket.
- 8.) Go to the other side, and choose the opposite holes from the ones you chose on the previous side.
 - a. Note: This is to make sure the screws don't hit each other inside the post, causing a tightening issue
- 9.) Repeat these steps on the bottom bracket
- 10.) Now that all screws are installed, gently snug them down. Do NOT over tighten. If you notice the bracket is deforming, stop. The screws do not need much torque to hold the guard properly. It is possible to bend the bracket, break welds, or snap screws. If you experience this, you have tightened the brackets / screws too much!
- 11.) Double check that when the plate is fully swung against the post, that the bottom of the plate hits the guard. If the target can swing above the guard and hit the 2X4, you need to slide the guard up higher behind the plate.

Components needed to install with wood screws

#	Description of Component	QTY EA
1	Welded AR500 Post Guard	1
2	No. 8 X 1" Wood Screws (NOT INCLUDED)	8



TOP VIEW



II.) Installation with INCLUDED 3/8” Grade 5 Carriage Bolts:

Note: Carriage Bolts will REQUIRE you to have an electric drill AND a 9/16” Drill Bit on hand. Remember to ALWAYS be safe with power tools. Consult your Power Tools User manuals for proper safety precautions and safety equipment.

Tools Needed for assembly:

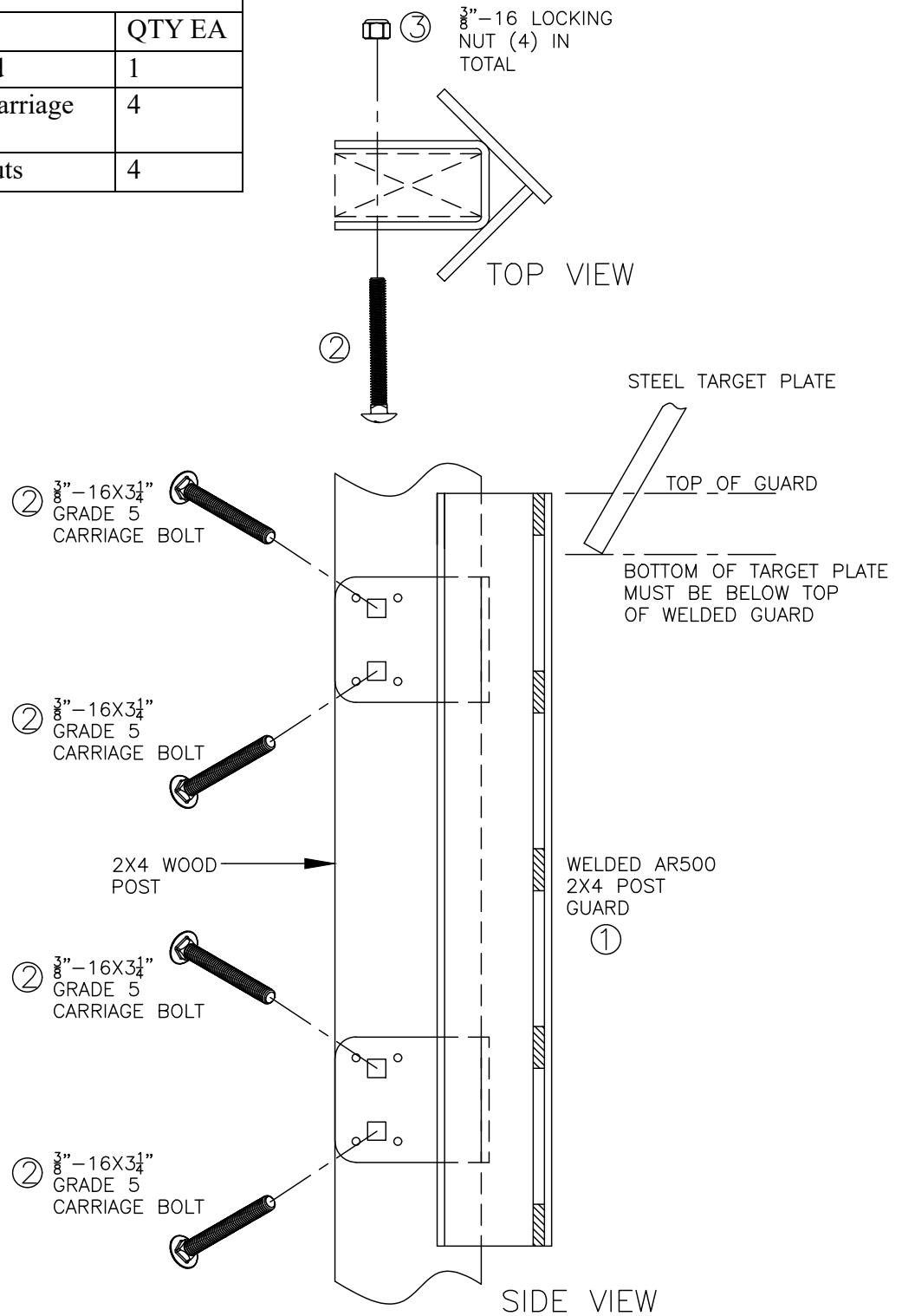
- Electric Drill
- 9/16” Drill Bit that is rated for drilling through wood
- 9/16” Socket and Ratchet OR 9/16” Open Wrench.

Safety Gear Needed for assembly:”

- Wear approved safety glasses
- Wear working gloves to protect hands from tools, screws, and other potentially hazardous items

- 1.) Verify all components are present.
- 2.) Fully Set up your target system (Base, 2X4, and top bracket) per the instruction manuals for the system (See our website for ALL user manuals: <https://tatargets.com/ta-targets-instruction-manuals/>)
- 3.) Slide 2X4 Post Guard over the 2X4
- 4.) Make sure the 2X4 Post guard is above the bottom most portion of the target plate.
- 5.) Push Target Plate all the way against the post / guard. If the target plate is ABOVE the post, you need to slide the post UP further.
- 6.) Use a Pen to MARK the two square holes. You need to mark these holes accurately to drill the necessary holes.
- 7.) Remove the Guard Temporarily. Drill THROUGH the 2X4 to the other side, precisely lined up and level with the holes you marked.
- 8.) Slide the Guard over the 2X4 once again, this time slide TWO Carriage bolts through the holes you just drilled.
 - a. This will allow you to properly position the guard to mark the remaining two holes.
- 9.) Mark the remaining two holes. Then remove the carriage bolts and remove the AR500 Guard.
- 10.) Drill the Remaining Two Holes.
- 11.) Slide AR500 Guard over 2X4, aligning ALL four holes. Slide the Carriage Bolts through ALL holes. If you drilled the holes correctly, they will slide right through. If a hole is out of alignment, repeat steps 3 – 10 and ensure your holes are properly positioned.
- 12.) Install the locking nuts at all 4 locations by hand
- 13.) Use a 9/16” Socket and a Ratched (OR a 9/16” Open Wrench)
- 14.) Hand Tighten ALL 4 Locking Nuts. DO NOT OVER TIGHTEN. Just Make the nuts snug and ensure you see threads coming through the nylon portion of the nut

Components needed to install with the included carriage bolts		
#	Description of Component	QTY EA
1	Welded AR500 Post Guard	1
2	3/8"-16 X 3 1/4" Grade 5 Carriage Bolts	4
3	3/8"-16 Nylon Locking Nuts	4



III.) Other Safety Considerations:

- 1.) While the AR500 Guard is made of durable material, it should never be shot at intentionally
- 2.) It is rated to withstand MOST rifle caliber stray impacts at 100+ Yards. Impacts closer than 100 yards CAN cause wear and tear at an accelerated rate.

Please read the below diagram for the rating of the AR500 guard to withstand direct bullet impacts.

Weapon Type	Caliber	Velocity	Bullet Make	Distance
Pistol	22LR	All Velocities	FMJ, HP, Lead	10 Yards
Rifle	22LR	All Velocities	FMJ, HP, Lead	10 Yards
Centerfire Pistol	.380, 9mm, 40, 45ACP, 10mm, 357 Sig	Up to 1500 FPS	FMJ, HP, TMJ, LEAD, Soft Point	10 Yards
Magnum Pistol Calibers	44 Mag, 454 Casull, etc	Up to 1800 FPS	FMJ, HP, TMJ, Lead, Soft Point	25 Yards
Pistol Caliber Carbines	9mm, 40, 45, 10mm, 44 mag, 357 mag, etc.	Up to 2,400 FPS	FMJ, HP, TMJ, Lead, Soft Point	10 Yards
Light Rifles	5.45X39, 5.56/.223, 7.62X39, 6.8SPC, 6.5 Grendel ETC	3,000 FPS OR LESS	FMJ, HP, TMJ, Lead, Soft Point, Ballistic Tip, Copper Expanding	100 yards
Larger Bore Rifles	.243, .308, 7mm-08, etc	3,000 FPS OR LESS	FMJ, HP, TMJ, Lead, Soft Point, Ballistic Tip, Copper Expanding	100 Yards
Magnum Rifles	.300 Win mag, 7mm mag, etc.	3,000 FPS OR LESS	FMJ, HP, TMJ, Lead, Soft Point, Ballistic Tip, Copper Expanding	200 Yards
Shotgun Slugs	.410, 20GA, 12 GA	ALL RIFLED SLUG VELOCITIES	Rifled Slugs	100 yards
Shotgun Buck Shot	.410, 16 GA, 20 GA, 28 GA, 12 GA	All Lead Buck Shot Variants	Buck Shot	30 Yards
Shotgun Bird Shot	.410, 16GA, 20 GA, 28 GA, 12 GA	All Lead Bird Shot Variants	Bird Shot	10 Yards
50BMG & Wildcat	NOT ALLOWED	NOT ALLOWED	NOT ALLOWED	NOT ALLOWED

Additional notes:

- RIFLE CALIBERS MUST BE 3,000 FPS OR LESS MUZZLE VELOCITY
- IF OVER 3,000 FPS, INCREASE DISTANCE BY 25 YARDS OVER ADVERTISED DISTANCE FOR EACH ADDITIONAL 100 FPS VELOCITY INCREASE

IV.) Distance Considerations:

Faster Bullets are more prone to cause damage than larger, slower bullets. When using ANY rifle, ALWAYS ensure the muzzle velocity is 3,000 FPS OR LESS. Damage will occur if you disobey the distance ratings above. **REMEMBER: THE 2X4 AR500 GUARD IS NOT DESIGNED TO BE INTENTIONALLY SHOT!**

V.) Bullet Construction:

The following bullet types are approved for use on our target plates and this post guard:

- Full Metal Jacket (FMJ)
- Ballistic / Plastic tip hunting ammunition
- Match Grade ammo (Boat Tail Hollow Points)
- Hollow Point Ammunition
- Soft Point Ammunition
- Bi-Metal Ammunition provided the velocity is 3,000 FPS OR LESS muzzle!
 - o See special note below

The Following bullet/ammo types are incompatible with our target plates and components AND SHOULD NEVER UNDER ANY CIRCUMSTANCE BE FIRED AT A GENESIS PLATE!!!

- M855 Steel Core Projectiles
- Solid Copper Machined Bullets (non-expanding solid copper)
- Expanding solid copper bullets over posted velocity limits
- SS109
- Russian Steel Core Ammunition
- Incendiary projectiles
- Tungsten core projectiles
- M855A1
- Any Armor Piercing or penetrating bullet construction not listed.
- Stainless Steel shotgun shot (Never acceptable on steel targets)

VI.) Special Notes and Considerations:

Hollow point ammunition, especially larger bore calibers, can leave slight impressions on the steel target faces. This is normal and will not create an unsafe condition. If heavy impressions are occurring (i.e. greater than 1/32" depth), increase distance until impressions cease. Shotgun slugs may also exhibit the same tendencies.

VII.) Expected wear and tear during use:

Over time it is normal to experience wear and tear on your system. This is expected. During normal use you may see:

- Chipped Powder coat or paint
- Worn out hardware/nuts/and bolts
- Edge chips from close edge impacts
- Chips around UNUSED holes (extra square holes) on target plates
- Worn out 2X4 posts
- Surface deformations on strike plate (OK to use unless craters with a depth of 1/8" or more exist)
- Wear and tear on 2X4 Boards. They can still get hit with low misses, so you may need to occasionally replace them.

Please note: The AR500 Guard is guaranteed against defects upon arrival. Welds fall under our warranty for welds, found on our website.

<https://tatargets.com/warranty/>

VIII.) Maintenance Considerations:

<u>Component</u>	<u>What to look for</u>	<u>Maximum Threshold</u>	<u>Action Step</u>
¼" AR500 Shields	Curves, Bending of plates, etc.	Maximum of >3/16" across the face of the target plate. If the curve is 3/16" or greater, it is time to replace.	Replace the The AR500 Post Guard if you see visible bending or deflection of the shields.
¼" AR500 Shields	Pitting or cratering of the ¼" AR500 shields	1/8" Depth and / or 3/16" in diameter (Or both are present)	Replace AR500 Guards that show signs of pitting or cratering as this can cause erratic fragmentation.
Welds	Cracking	If any welds have FULL cracks that are resulting in a failure of the Guard, discontinue use.	Contact us and send photos and replace the worn our AR500 Guard.
Edge hits / Chips	Visible Chipping along the edge of the Guard	Chips along the edge of the guard that are not creating cracks are NOT an issue.	No necessary actions so long as no cracks are forming. If cracks are forming, replace the guard.
Hardware	Hardware that is worn out	If the hardware shows visible wear and tear from impacts and/or bullet fragmentation, replace the hardware	Replace any hardware that shows visible wear and tear.
Worn out 2X4 Post, Rotten, Cracking, Unstable, Or Swelling of post	A 2X4 post that is no longer structurally sound	If the 2X4 has met its service life and can no longer safely support the system, it needs to be replaced.	Replace the 2X4 post with a new one. Follow installation instructions with new post.

IX.) Other Accessories:

Please consider checking out all our other products in the Genesis Line AND Exodus Line of steel targets. We offer a full line of targets and accessories to add to your range. Train with purpose!

If you have any other questions, please feel free to email our team and we'll be able to further assist you with setting up your new target system.

Customer Service Email: info@tatargets.com

TA Targets

PO Box 212

Womelsdorf, PA 19567