



## Armored T-Post & Mounting Bracket Instruction Manual

Designed for our Genesis and Exodus Line of Steel Target Plates and Mounts.



The Armored T-Post is more than just a post. This is a cohesive system of brackets, mounts, and accessories that surround this AR500 Armored T-Post. Inside this manual are instructions for the following components: Armored T-Post, Genesis T-Post Mount, Heavy Duty T-Post Mount, Front / Middle Mount T-Post Bracket, A-DAP T-Post Mount, and A-DAP Front / Middle T-Post Mounting bracket. **BEFORE SHOOTING: FULLY READ THIS MANUAL AND THE INCLUDED SAFE SHOOTING PAMPHLET WE INCLUDE WITH EACH SHIPMENT. ADDITIONALLY, READ THE STICKER ON THE BACK OF YOUR TARGET PLATE PRIOR TO SHOOTING. ALWAYS OBEY OUR SAFETY REQUIREMENTS. UNDER NO CIRCUMSTANCES SHOULD YOU ALTER OR MISUSE YOUR SYSTEMS. ALWAYS WEAR APPROVED HEARING, EYE PROTECTION AND SAFETY GEAR WHENEVER HANDLING A FIREARM.** As always, if you have ANY questions, please contact us via email PRIOR to using our products. The Customer Service email is [info@tatargets.com](mailto:info@tatargets.com). You may also call 1-833-746-4785 M-F during business hours. If questions EVER exist, cease use of your target until we can address your questions and/or concerns.

**\*BEFORE YOU BEGIN:** The Genesis line of targets features DIFFERENT caliber and distance ratings than our Exodus Line of Targets (A-DAP Systems, Vital Zones, VTAR Poppers, Phoenix, Falling Tree, Dueling Trees, Etc.). It is CRITICALLY important to follow our requirements. NEVER ENGAGE WITH IMPROPER AMMUNITION OR AT CLOSER DISTANCES THAN SHOWN ON OUR SAFETY DOCUMENTATION FOR ANY OF OUR PRODUCTS, SYSTEMS, AND COMPONENTS.

## Table of Contents:

Page 1	General Notes, Contact information, Special Notes
Page 2	Table of Contents, Special Safety Considerations
Page 3	Installation of Armored T-Post and Optional Flag Assembly
Page 4	Genesis T-Post Gong Bracket Installation Instructions
Page 5	Heavy Duty T-Post Bracket Installation Instructions
Page 6	Front / Middle Mount HD T-Post Bracket Installation Instructions
Page 7	A-DAP T-Post Target Mount Bracket Installation
Page 8	A-DAP Front / Middle Mount Target Plate Bracket Installation
Page 9	Special Target Plate Considerations / Setup
Page 10	Genesis 3/8" AR500 Target Distance Ratings
Page 11	Exodus 3/8" AR550 Target Distance Ratings
Page 12	Exodus 1/2" AR550 Target Distance Ratings
Page 13	Proper Bullet Types & Cartridge Considerations
Page 14	General Maintenance Considerations / Best Practices
Page 15	Warranty, Maintenance, Contact us with questions

**! Lost Components:** During setup, tear-down and transport it is extremely important to make sure you do not lose any of your hardware or components. Always be mindful of how and where you tear down your parts, where you lay your hardware, etc. Be sure to keep it organized and stored properly to avoid losing. Replacements can be purchased on our website.

**! General T-Post Installation Note: NEVER USE BRACKETS AS A HAMMER POINT. HAMMERING ON ANY OF OUR T-POST MOUNTS WILL DESTROY THE MOUNTS. THE ONLY PROPER METHOD OF T-POST INSTALLATION IS WITH OUR HD T-POST DRIVER.**

**! T-Post Safety note: Armored T-Posts are NOT MEANT TO BE DIRECTLY IMPACTED. DO NOT INTENTIONALLY SHOOT ARMORED T-POST. DAMAGE CAN OCCUR. THE ARMORED T-POST IS DESIGNED TO WITHSTAND BULLET FRAGMENTATION FROM TARGET PLATE IMPACTS.**


### I.) **AR500 Armored T-Post Installation Instructions:**

Note: The Armored T-Post is a welded unit, but we also offer a bolt-on flag assembly for even more stability. The Flag accessory is NOT required, but it is great for loose soil conditions.

#### **Optional Installation of T-Post Flag (See Diagram 2):**

- 1.) Take your Flag Kit (TP-FLAG-ASSY) and all hardware. Line up the four holes with the holes toward the bottom of the Armored T-Post.
- 2.) Note: The Flag has a slot that fits around the tab and welds on the rear of the plate.
- 3.) Slide all 4 carriage bolts through the plate and post. Note the direction in Diagram 2.
- 4.) Hand tighten the (4) locking nuts until you cannot turn them by hand.
- 5.) Use a socket or open-ended wrench to fully hand-tighten the locking nuts in place.
- 6.) After the Flag is bolted in place, follow instructions for T-Post installation into the ground.

#### **Installing T-Post into the Ground (See Diagram 1):**

- 1.) Locate the spot where you would like to install your post. Be sure that it is facing where you will be shooting from. Always remember: Shoot STRAIGHT ONTO your targets at a perpendicular angle. NEVER shoot from harsh angles or bracket impacts and damage will occur.
- 2.) Using only your hands, lift the post about 12" off the ground, gently push the tip of the Armored T-Post into the ground with slight momentum. This will break the tip into the ground enough to hold itself up.
- 3.)  Grab your TA Targets Heavy Duty T-Post Driver. Note: ALWAYS WEAR EYE PROTECTION WHILE INSTALLING T-POSTS! NEVER USE A HAMMER TO INSTALL ARMORED T-POST! DAMAGE WILL OCCUR.
- 4.) While Keeping the Armored T-Post INSIDE the driver, gently lift and drive down the driver with force. Do this repeatedly until the post is AT LEAST 12" INTO THE GROUND.
- 5.) Note: The Diagram shows an OPTIONAL Flag. This Flag is NOT required but can be used in very loose soil conditions.
- 6.) Verify the post is solid by lightly pushing it back to front slightly. It should be very difficult to initiate movement, signaling that it is installed properly.

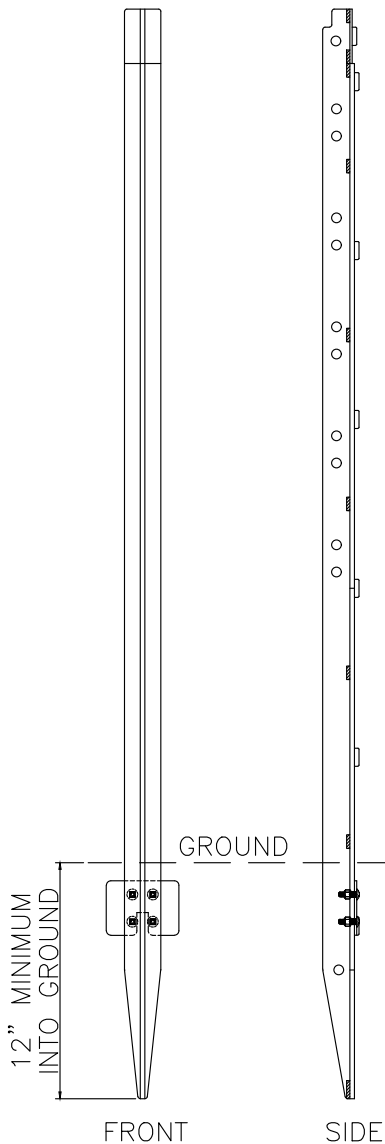


Diagram 1

Diagram Number	Description	Quantity
1	10 Gauge Flag Plate	One
2	1/4"-20X1" Carriage Bolts	4
3	1/4"-20 Locking Nuts	4

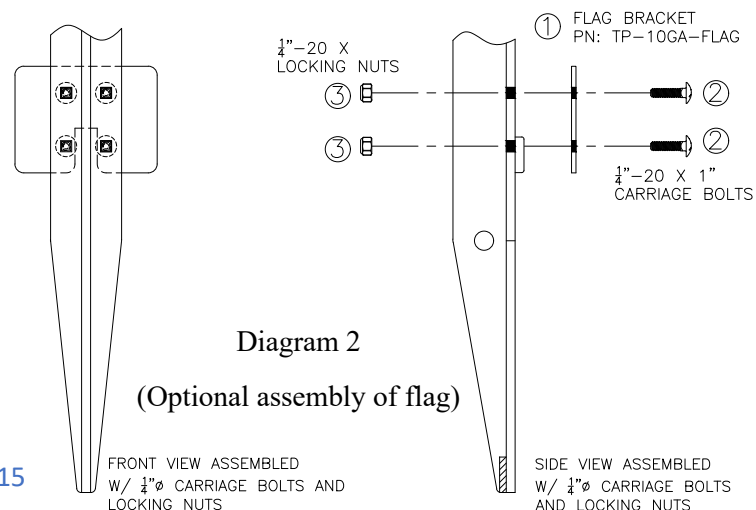


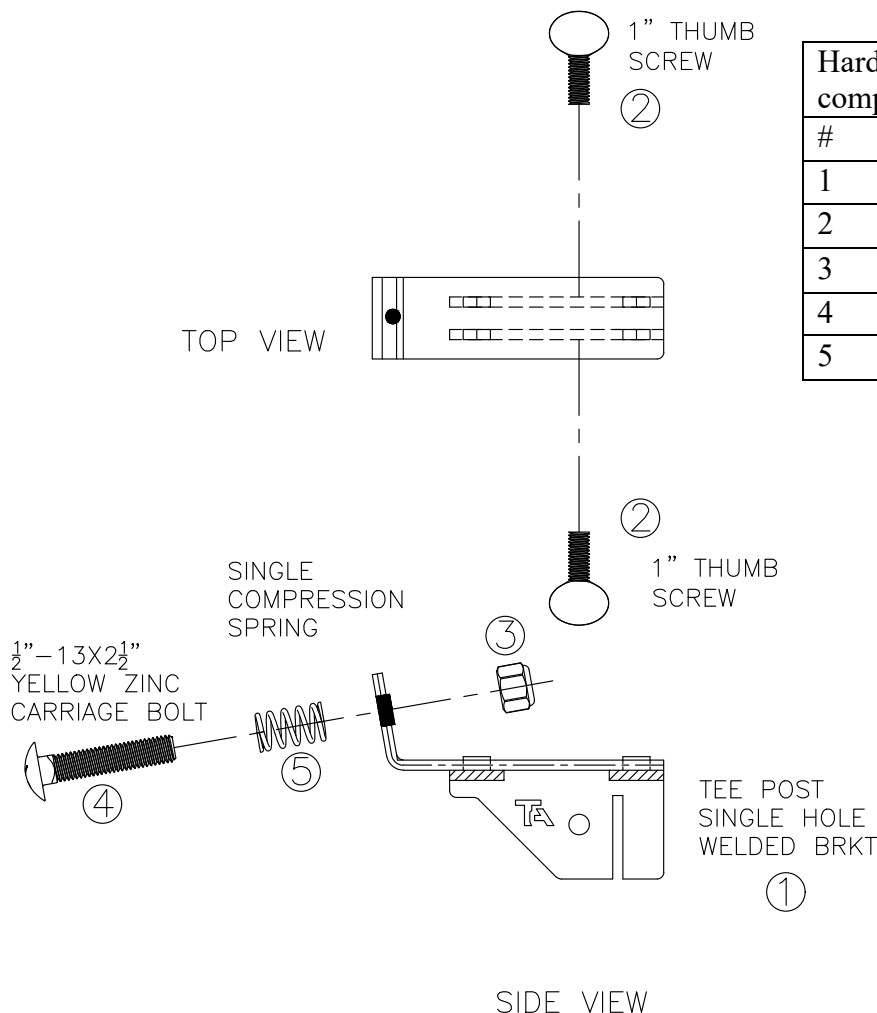
Diagram 2

(Optional assembly of flag)

## II.) Tee Post Gong Bracket:

Note: The Tee Post Bracket is a welded bracket and includes all necessary hardware. (Complete Kit Part Number: TP-HNGR-ASSY)

- 1.) Verify all components are present.
- 2.) Remove the nut, Carriage bolt and spring from assembly (3, 4, & 5). Set aside (do not lose)
- 3.) Put Carriage bolt (#4) through hole in target plate.
- 4.) Slide spring (#5) over carriage bolt that sticks through plate.
- 5.) Slide target plate and bolt through the TP top bracket Hole, ensuring the spring is on the SAME side of the bracket as the target plate.
- 6.) Install lock nut onto carriage bolt (#3). DO NOT OVER TIGHTEN
  - a. Spring should NOT be fully compressed. Leave ample room for spring to compress under impacts.
- 7.) Install target plate as shown in Photos on front page.
- 8.) ⚠️ Use TA Targets HD T-Post Driver (CAREFULLY) to pound T-post into ground
  - a. Post must be at least 12" of depth below undisturbed surface.
- 9.) Slide bracket (#1) and target plate over Tee Post & hand tighten BOTH thumb screws.



Hardware and Component Table. Verify ALL components are present before use!		
#	Description of Component	QTY EA
1	Welded Tee Post Bracket	1
2	3/8"-16 X 1" Thumb Screw	2
3	1/2"-13 Locking Nut	1
4	1/2"-13 X 2 1/2" Carriage Bolt YZ	1
5	Custom Compression Spring	1

**\*Please Note: You MUST Use Tee Posts that are 1.25 LB/FT. Heavier duty Tee Posts will not fit into the bracket. Each post is different, and some are deformed from factory. Only choose T-posts that are straight and true and do not exhibit damage to the end.**

**\*\*When driving posts into ground, always wear eye protection, hearing protection, and gloves to protect hands. Hammering the bracket itself might cause damage to the bracket.**

**This Bracket is compatible with our AR500 Armored T-Posts**

### III.) Heavy Duty T-Post Bracket:

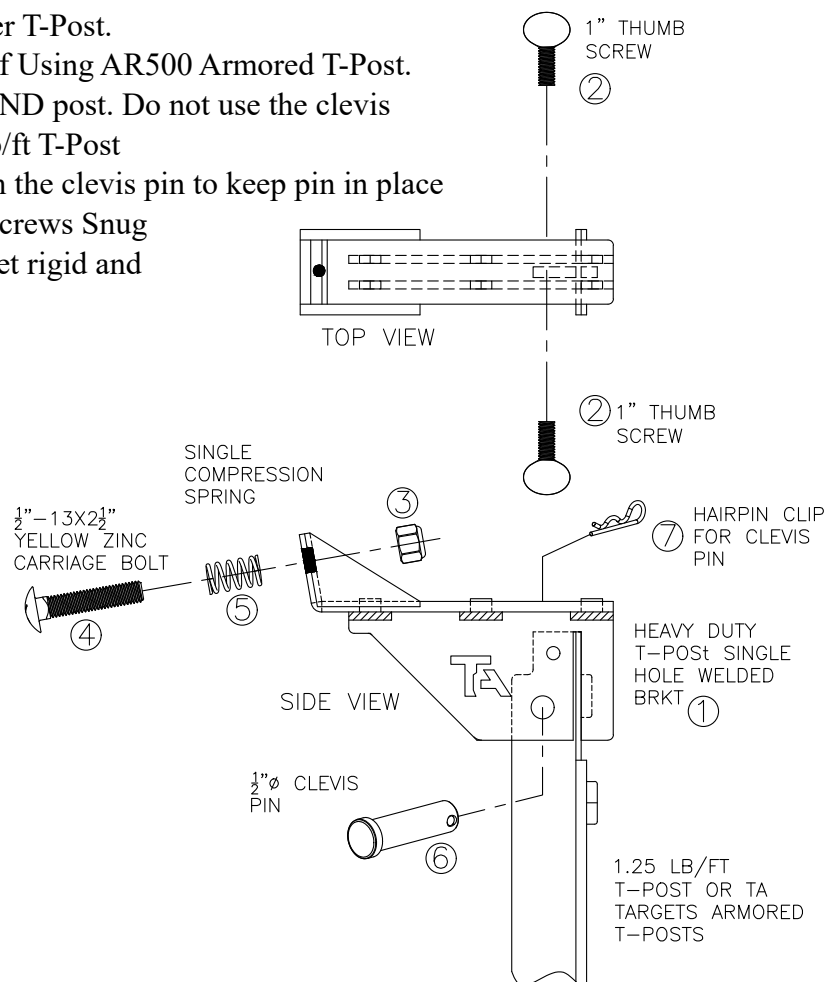
Note: The Heavy-Duty T-Post Bracket is a stronger version of our standard Genesis T-Post Brackets. It includes all necessary hardware for installation.

(Complete KIT Part Number: TP-HNGR-HD-ASSY)

- 1.) Verify all components are present.
- 2.) Remove the nut, Carriage bolt and spring from assembly (3, 4, & 5). Set aside (do not lose)
- 3.) Put Carriage bolt (#4) through hole in target plate.
- 4.) Slide spring (#5) over carriage bolt that sticks through plate.
- 5.) Slide target plate and bolt through the TP top bracket Hole, ensuring the spring is on the SAME side of the bracket as the target plate.
- 6.) Install lock nut onto carriage bolt (#3). DO NOT OVER TIGHTEN
  - a. Spring should NOT be fully compressed. Leave ample room for spring to compress under impacts.
- 7.) ⚠️ Use TA Targets Heavy Duty T-Post Driver to Install T-Post. NEVER USE HAMMERS!
  - a. Post must be at least 12" of depth below undisturbed surface.
- 8.) Slide bracket (#1) and target plate over T-Post.
- 9.) Install Clevis Pin (6) Through Hole (If Using AR500 Armored T-Post. The pin will go through the bracket AND post. Do not use the clevis Pin if you are using a standard 1.25 lb/ft T-Post
- 10.) Install Hairpin clip (7) through the clevis pin to keep pin in place
- 11.) Hand tighten BOTH Thumb Screws Snug
 

These Thumb Screws make the bracket rigid and Snug on the T-Post

Hardware and Component Table. Verify ALL components are present before use!		
#	Description of Component	QTY EA
1	Welded HD T-Post Bracket	1
2	3/8"-16 X 1" Thumb Screw	2
3	1/2"-13 Locking Nut	1
4	1/2"-13 X 2 1/2" Carriage Bolt YZ	1
5	Custom Compression Spring	1
6	1/2" X 1.5" Clevis Pin	1
7	Hairpin Clip for Clevis Pin	1





#### **IV.) Front / Middle Heavy-Duty T-Post Bracket:**

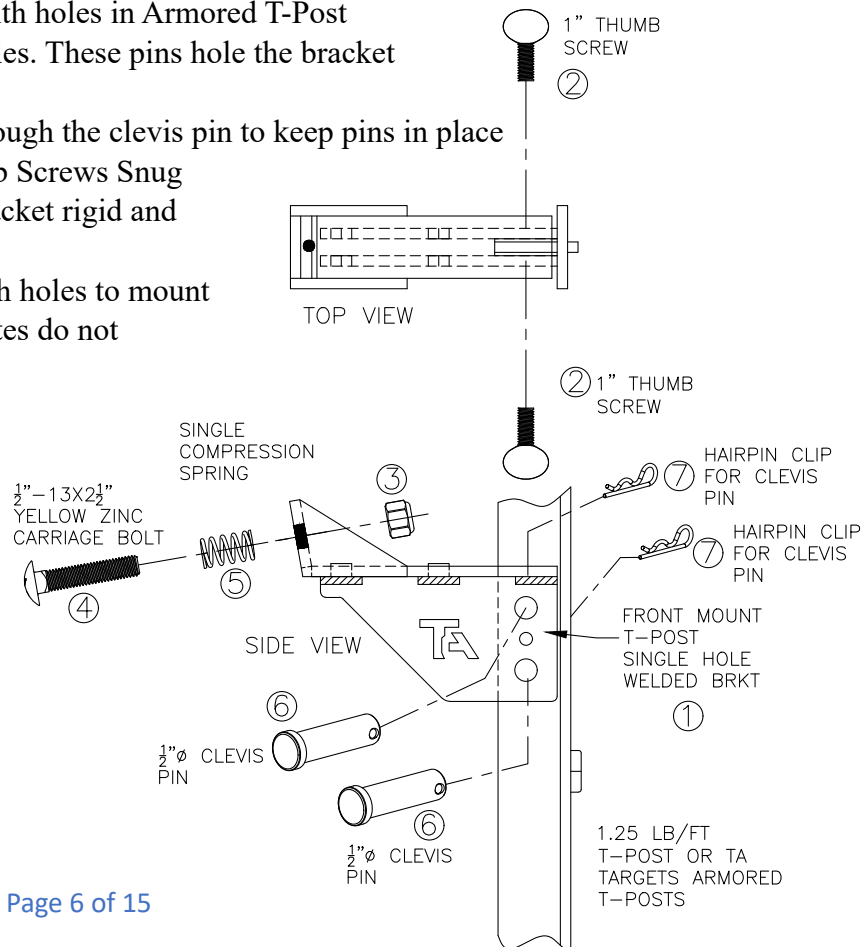
Note: The Front Mount Heavy-Duty T-Post Bracket allows you to mount target plates up and down the spine of the AR500 Armored T-Post. These Brackets **ONLY** work with our Armored T-Post. They do **NOT** work with standard 1.25 lb/ft T-Posts.

(Complete KIT Part Number: TP-HNGR-FM-ASSY)

- 1.) Verify all components are present.
- 2.) Remove the nut, Carriage bolt and spring from assembly (3, 4, & 5). Set aside (do not lose)
- 3.) Put Carriage bolt (#4) through hole in target plate.
- 4.) Slide spring (#5) over carriage bolt that sticks through plate.
- 5.) Slide target plate and bolt through the TP top bracket Hole, ensuring the spring is on the SAME side of the bracket as the target plate.
- 6.) Install lock nut onto carriage bolt (#3). **DO NOT OVER TIGHTEN**
  - a. Spring should **NOT** be fully compressed. Leave ample room for spring to compress under impacts.
- 7.) ⚠️ Use TA Targets Heavy Duty T-Post Driver to Install T-Post. **NEVER USE HAMMERS!**
  - a. Post must be at least 12" of depth below undisturbed surface.
- 8.) Slide bracket (#1) and target plate over T-Post spine as shown. Be sure To align BOTH holes in bracket with holes in Armored T-Post
- 9.) Install Clevis Pins (6) Through Holes. These pins hold the bracket to the Armored T-Post
- 10.) Install Hairpin clips (7) through the clevis pin to keep pins in place
- 11.) Hand tighten BOTH Thumb Screws Snug  
These Thumb Screws make the bracket rigid and Snug on the T-Post
- 12.) Note: When choosing which holes to mount  
Bracket to spine, be sure target plates do not

Hit each other.

Hardware and Component Table. Verify ALL components are present before use!		
#	Description of Component	QTY
1	Welded HD T-Post Bracket	1
2	3/8"-16 X 1" Thumb Screw	2
3	1/2"-13 Locking Nut	1
4	1/2"-13 X 2 1/2" Carriage Bolt YZ	1
5	Custom Compression Spring	1
6	1/2" X 1.5" Clevis Pin	2
7	Hairpin Clip for Clevis Pin	2



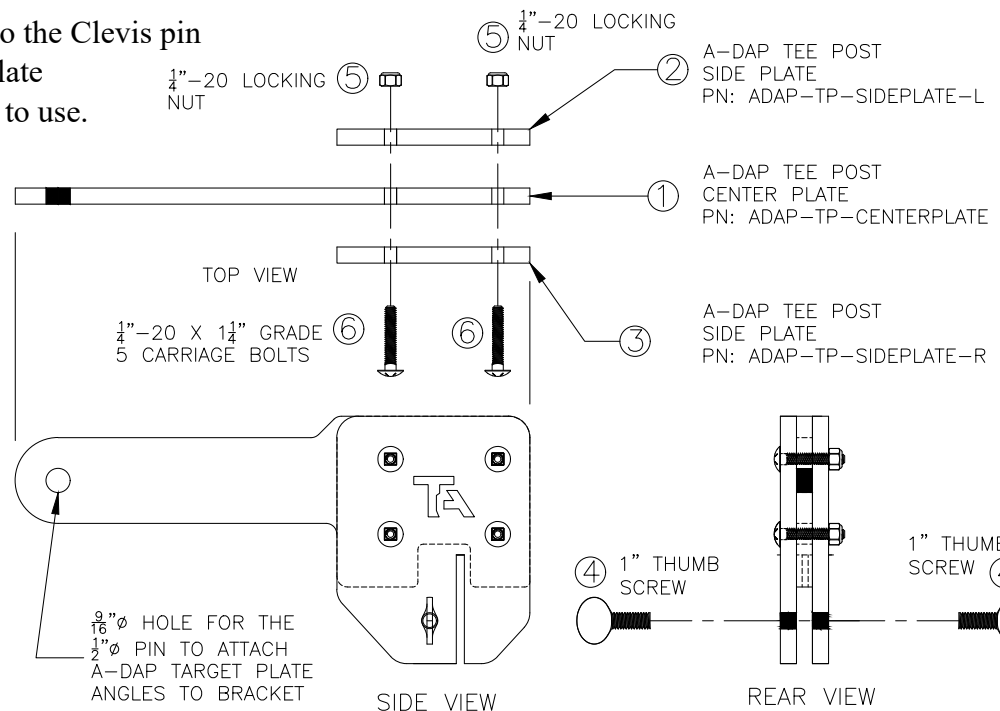
### **V.) A-DAP T-Post Gong Bracket:**

Note: The Tee Post Bracket is a welded bracket and includes all necessary hardware. Complete Kit Part number: ADAP-TP-ASSEMBLY

- 1.) Verify all components are present.
- 2.) ⚠️ Use TA Targets HD T-Post Driver (Never use Hammers!) to pound T-post into ground
  - a. Post must be at least 12" of depth below undisturbed surface.
- 3.) Loosen (Or remove thumb screws), slide the A-DAP Bracket OVER your T-Post
- 4.) In the event that the bracket does NOT slide over the T-Post, loosen the FOUR locking nuts on the bracket (#5 on diagram)
- 5.) This will allow enough clearance to slide over deformed or slightly out of spec posts
- 6.) Re-tighten the 1/4" Locking Nuts (#5 on diagram)
- 7.) Hand Tighten the Thumb Screws (#4 on diagram)
- 8.) Use the 1/2" Clevis pin and clip on your A-DAP target plate, slide into angles on back of the target plate THROUGH the Tee post bracket and out the other side of the second angle.
- 9.) Install hairpin clip into the Clevis pin to secure the target plate
- 10.) You are ready to use.

⚠️ **\*Note: The A-DAP T-Post Mount will interface properly with 1.25 lb/ft T-Posts AND our Armored AR500 T-Post.**

⚠️ **Note: A-DAP T-Post Mount DOES NOT interface with our A-DAP Hostage Bracket and Paddle assembly.**




Hardware and Component Table. Verify ALL components are present before use!

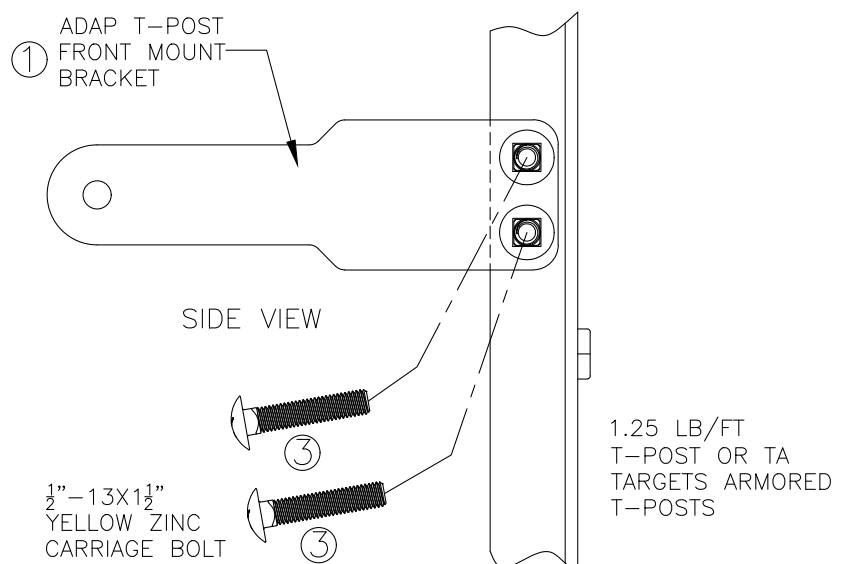
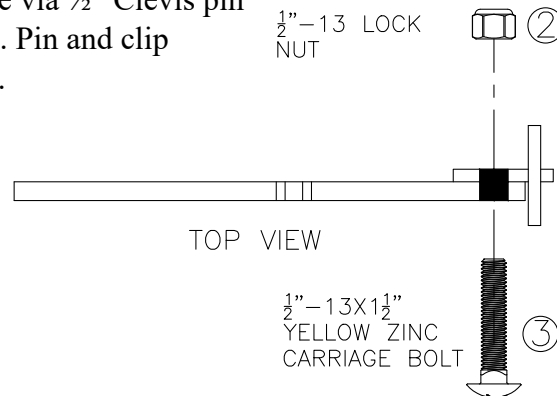
#	Description of Component	QTY EA
1	Center Section of Bracket	1
2	Left Side Plate of Bracket	1
3	Right Side Plate of Bracket	1
4	3/8"-16 X 1" Thumb Screw	2
5	1/4"-20 Locking Nuts	4
6	1/4"-20X1 1/4" Carriage Bolts	4

### **VI.) A-DAP Front / Middle Mount T-Post Gong Bracket:**

Note: The A-DAP Front / Middle Mount T-Post Bracket is a Bolted bracket and includes all necessary hardware. (Complete Kit Part number: TP-ADAP-FM-ASSY)

- 1.) Verify all components are present.
- 2.)  Use TA Targets Heavy Duty T-Post Driver to Install T-Post. NEVER USE HAMMERS!
  - a. Post must be at least 12" of depth below undisturbed surface.
- 3.) Align the A-DAP Front Mount Bracket with two of the holes on the spine of the AR500 Armored T-Post as Shown Below.
- 4.) Slide (2) 1/2" Grade 8 Carriage Bolts THROUGH Bracket AND Post
- 5.) Install and Hand Tighten 1/2" Locking nuts onto Carriage Bolts
- 6.) Use a 3/4" Socket or 3/4" Wrench to hand-tighten locking nuts
- 7.) Install your desired A-DAP Target plate via 1/2" Clevis pin  
And clip through 9/16" hole in bracket. Pin and clip  
Will be included with your target plate.

Hardware and Component Table. Verify ALL components are present before use!		
#	Description of Component	QTY EA
1	Front / Middle Mount A-DAP Bracket	1
2	1/2"-13 Locking Nuts	2
3	1/2"-13 X 1.5" Grade 8 Carriage Bolts	2





## **VII.) Special Considerations for Target Plates.**

When mounting multiple target plates on the spine of your Armored T-Post, it is important to make sure that there is space between each target plate. If you are mounting target plates that are TOO LARGE (They touch, impact, or one target is in front of the other), you will need to choose a smaller target plate or use a lower set of holes for the front / middle mount bracket that you chose.

The good news: There are ample holes in the AR500 Armored T-Post to allow a wide array of target plates to be mounted properly and safely.



**VIII.) Genesis 3/8" AR500 Target Plate Cartridge and Distance Ratings:**

The genesis line features many different shape and size gong target plates. All gong shapes and sizes (single hole, two hole, and three hole) will interface properly with the Single Hole and Tee Post Top Brackets. **Genesis AR500 Plates are Powder Coated Mineral Bronze Color.** Note:

- When using 2-hole square gongs, the gong can be mounted as a square or a diamond (from the corner)
- When using 2-hole round gongs, use the hold that best centers the plate on the bracket
- When using 3-hole gongs of any size, use the center most hole for mounting to your top bracket.

Materials Used: The Genesis gongs are an economical domestic AR500 steel. Genesis Plates are Powder Coated Mineral Bronze. This steel is subject to the caliber, velocity, and distance restrictions listed below. **⚠️ UNDER NO CIRCUMSTANCES SHOULD YOU ENGAGE THIS TARGET AGAINST THESE REQUIREMENTS. DOING SO WILL LIKELY RESULT IN DAMAGE TO THE TARGET SYSTEM, PROPERTY, AND MAY RESULT IN SERIOUS INJURY OR EVEN DEATH. ALWAYS FOLLOW OUR POSTED SAFETY REQUIREMENTS.**

Weapon Type	Cartridge	Velocity	Bullet Make	Distance
Pistol	22LR	All Velocities	FMJ, HP, Lead	10 Yards
Rifle	22LR	All Velocities	FMJ, HP, Lead	10 Yards
Centerfire Pistol	.380, 9mm, 40, 45ACP, 10mm, 357 Sig	Up to 1500 FPS	FMJ, HP, TMJ, LEAD, Soft Point	10 Yards
Magnum Pistol Calibers	44 Mag, 454 Casull, etc	Up to 1800 FPS	FMJ, HP, TMJ, Lead, Soft Point	25 Yards
Pistol Caliber Carbins	9mm, 40, 45, 10mm, 44 mag, 357 mag, etc.	Up to 2,400 FPS	FMJ, HP, TMJ, Lead, Soft Point	75 Yards
Light Rifles	5.45X39, 5.56/.223, 7.62X39, 6.8SPC, 6.5 Grendel ETC	3,000 FPS OR LESS	FMJ, HP, TMJ, Lead, Soft Point, Ballistic Tip, Copper Expanding	100 yards
Larger Bore Rifles	.243, .308, 7mm-08, etc	3,000 FPS OR LESS	FMJ, HP, TMJ, Lead, Soft Point, Ballistic Tip, Copper Expanding	100 Yards
Magnum Rifles	.300 Win mag, 7mm mag, etc.	3,000 FPS OR LESS	FMJ, HP, TMJ, Lead, Soft Point, Ballistic Tip, Copper Expanding	200 Yards
Shotgun Slugs	.410, 20GA, 12 GA	ALL RIFLED SLUG VELOCITIES	Rifled Slugs	100 yards
Shotgun Buck Shot	.410, 16 GA, 20 GA, 28 GA, 12 GA	All Lead Buck Shot Variants	Buck Shot	30 Yards
Shotgun Bird Shot	.410, 16GA, 20 GA, 28 GA, 12 GA	All Lead Bird Shot Variants	Bird Shot	10 Yards
50BMG & Wildcat	NOT ALLOWED	NOT ALLOWED	NOT ALLOWED	NOT ALLOWED

**⚠️ Additional notes:**

- RIFLE CARTRIDGES MUST BE 3,000 FPS OR LESS MUZZLE VELOCITY
- IF OVER 3,000 FPS, INCREASE DISTANCE BY 25 YARDS OVER ADVERTISED DISTANCE FOR EACH ADDITIONAL 100 FPS VELOCITY INCREASE

**IX.) A-DAP 3/8" AR 550 Safe Shooting Distances:**

Note: Exodus AR550 Plates are Powder Coated White Color, Designating AR550 / Premium Materials.

Weapon Type	Cartridge	Velocity	Bullet Make	Distance
Pistol	22LR	All Velocities	FMJ, HP, Lead	10 Yards
Rifle	22LR	All Velocities	FMJ, HP, Lead	10 Yards
Centerfire Pistol	.380, 9mm, 40, 45ACP, 10mm, 357 Sig	Up to 1500 FPS	FMJ, HP, TMJ, LEAD, Soft Point	10 Yards
Magnum Pistol Calibers	44 Mag, 454 Casull, etc	Up to 1800 FPS	FMJ, HP, TMJ, Lead, Soft Point	25 Yards
Pistol Caliber Carbines	9mm, 40, 45, 10mm, 44 mag, 357 mag, etc.	Up to 2,400 FPS	FMJ, HP, TMJ, Lead, Soft Point	25 Yards
Light Rifles	5.45X39, 5.56/.223, 7.62X39, 6.8SPC, 6.5 Grendel ETC	3,000 FPS OR LESS	FMJ, HP, TMJ, Lead, Soft Point, Ballistic Tip, Copper Expanding	50 yards
Larger Bore Rifles	.243, .308, 7mm-08, etc	3,000 FPS OR LESS	FMJ, HP, TMJ, Lead, Soft Point, Ballistic Tip, Copper Expanding	50 Yards
Magnum Rifles	.300 Win mag, 7mm mag, 7 PRC, 300 PRC etc.	3,000 FPS OR LESS	FMJ, HP, TMJ, Lead, Soft Point, Ballistic Tip, Copper Expanding	100 Yards
Shotgun Slugs	.410, 20GA, 12 GA	ALL RIFLED SLUG VELOCITIES	Rifled Slugs	100 yards
Shotgun Buck Shot	.410, 16 GA, 20 GA, 28 GA, 12 GA	All Lead Buck Shot Variants	Buck Shot	30 Yards
Shotgun Bird Shot	.410, 16GA, 20 GA, 28 GA, 12 GA	All Lead Bird Shot Variants	Bird Shot	10 Yards
50BMG & Wildcat	408 CT, 416 Barrett, 50 BMG	3,000 FPS Muzzle Or LESS	FMJ, Copper Solid, A-Tip / Match projectiles	300+ Yards

⚠️ Additional notes:

- RIFLE CARTRIDGES MUST BE 3,000 FPS OR LESS MUZZLE VELOCITY
- IF OVER 3,000 FPS, INCREASE DISTANCE BY 25 YARDS OVER ADVERTISED DISTANCE FOR EACH ADDITIONAL 100 FPS VELOCITY INCREASE

⚠️ Wildcat and 50BMG Usage:

- Distance ratings in the above table for calibers like 408CT, 416 Barrett, and 50 BMG are PLATE distance ratings.
- It is critically important to understand that impacts on a T-Post and / or Armored T-Post, even at these approved distances, can cause damage to your post. This is not covered under warranty.
- Under no circumstances should you use Armor Piercing, Steel Core, Tungsten, Incendiary or explosive ammunition on ANY of our target plates or systems.

⚠️ If you have specific questions regarding your caliber, contact us PRIOR to shooting your steel target systems.

**X.) A-DAP 1/2" AR 550 Safe Shooting Distances:**

Note: Exodus AR550 Plates are Powder Coated White Color, Designating AR550 / Premium Materials.

Weapon Type	Caliber	Velocity	Bullet Make	Distance
Pistol	22LR	All Velocities	FMJ, HP, Lead	10 Yards
Rifle	22LR	All Velocities	FMJ, HP, Lead	10 Yards
Centerfire Pistol	.380, 9mm, 40, 45ACP, 10mm, 357 Sig	Up to 1500 FPS	FMJ, HP, TMJ, LEAD, Soft Point	10 Yards
Magnum Pistol Calibers	44 Mag, 454 Casull, etc	Up to 1800 FPS	FMJ, HP, TMJ, Lead, Soft Point	25 Yards
Pistol Caliber Carbines	9mm, 40, 45, 10mm, 44 mag, 357 mag, etc.	Up to 2,400 FPS	FMJ, HP, TMJ, Lead, Soft Point	25 Yards
Light Rifles	5.45X39, 5.56/.223, 7.62X39, 6.8SPC, 6.5 Grendel ETC	3,000 FPS OR LESS	FMJ, HP, TMJ, Lead, Soft Point, Ballistic Tip, Copper Expanding	30 yards
Larger Bore Rifles	.243, .308, 7mm-08, etc	3,000 FPS OR LESS	FMJ, HP, TMJ, Lead, Soft Point, Ballistic Tip, Copper Expanding	50 Yards
Magnum Rifles	.300 Win mag, 7mm mag, 7 PRC, 300 PRC etc.	3,000 FPS OR LESS	FMJ, HP, TMJ, Lead, Soft Point, Ballistic Tip, Copper Expanding	100 Yards
Shotgun Slugs	.410, 20GA, 12 GA	ALL RIFLED SLUG VELOCITIES	Rifled Slugs	100 yards
Shotgun Buck Shot	.410, 16 GA, 20 GA, 28 GA, 12 GA	All Lead Buck Shot Variants	Buck Shot	30 Yards
Shotgun Bird Shot	.410, 16GA, 20 GA, 28 GA, 12 GA	All Lead Bird Shot Variants	Bird Shot	10 Yards
50BMG & Wildcat	408 CT, 416 Barrett, 50 BMG	3,000 FPS Muzzle Or LESS	FMJ, Copper Solid, A-Tip / Match projectiles	100+ Yards

**▲ Additional notes:**

- RIFLE CARTRIDGES MUST BE 3,000 FPS OR LESS MUZZLE VELOCITY
- IF OVER 3,000 FPS, INCREASE DISTANCE BY 25 YARDS OVER ADVERTISED DISTANCE FOR EACH ADDITIONAL 100 FPS VELOCITY INCREASE

**▲ Wildcat and 50BMG Usage:**

- Distance ratings in the above table for calibers like 408CT, 416 Barrett, and 50 BMG are PLATE distance ratings.
- It is critically important to understand that impacts on a T-Post and / or Armored T-Post, even at these approved distances, can cause damage to your post. This is not covered under warranty.
- Under no circumstances should you use Armor Piercing, Steel Core, Tungsten, Incendiary or explosive ammunition on ANY of our target plates or systems.

▲ If you have specific questions regarding your caliber, contact us PRIOR to shooting your steel target systems.



**XI.) Distance Considerations:**

Velocity can damage steel. Small, fast bullets will cause more damage than larger, slower bullets. When using ANY rifle, ALWAYS ensure the muzzle velocity is 3,000 FPS OR LESS. Damage will occur if you disobey the distance ratings above. The Genesis Line of Gong Targets (Powder Coated Mineral Bronze) is meant to equip citizens at reasonable prices. If you desire to engage in extreme high-volume shooting, consider adding some of our Exodus Line of steel targets. Our Exodus AR550 target plates (Powder Coated White) are better suited for faster, high-volume calibers.

**XII.) Bullet Construction:**

The following bullet types are approved for use on the genesis target plates

- Full Metal Jacket (FMJ)
- Ballistic / Plastic tip hunting ammunition
- Match Grade ammo (Boat Tail Hollow Points)
- Hollow Point Ammunition
- Soft Point Ammunition
- Bi-Metal Ammunition provided the velocity is 3,000 FPS OR LESS muzzle!
  - o ⚠️ Bi-Metal Ammo Note: Bi-Metal Ammunition MAY spark enough to cause / ignite fires to surrounding brush and vegetation. NEVER use Bi-Metal Ammunition in dry climates, or areas that are high risk of fires. ⚠️

⚠️ The Following bullet/ammo types are incompatible with TA Targets Systems AND SHOULD NEVER UNDER ANY CIRCUMSTANCE BE FIRED AT YOUR TARGET PLATE(S)!!! ⚠️

- M855 Steel Core Projectiles
- Solid Copper Machined Bullets (non-expanding solid copper)
- Expanding solid copper bullets over posted velocity limits
- SS109
- Russian Steel Core Ammunition
- Incendiary projectiles
- Tungsten core projectiles
- M855A1
- Any Armor Piercing or penetrating bullet construction not listed.
- Stainless Steel shotgun shot (Never acceptable on steel targets)

**XIII.) Special Notes and Considerations:**

Hollow point ammunition, especially larger bore calibers, can leave slight impressions on the steel target faces. This is normal and will not create an unsafe condition. If heavy impressions are occurring (i.e. greater than 1/32" depth), increase distance until impressions cease. Shotgun slugs may also exhibit the same tendencies.

⚠️ NEVER (intentionally or unintentionally) shoot wood posts, Armored Posts, T-Posts, Armored T-Posts, or any mounting or base brackets or components. Damage WILL occur.



**XIV.) Expected wear and tear during use:**

Over time it is normal to experience wear and tear on your system. This is expected. During normal use you may see:

- Chipped Powder coat or paint
- Worn out hardware/nuts/and bolts
- Edge chips from close edge impacts
- Chips around UNUSED holes (extra square holes) on target plates
- Worn out 2X4 posts
- Surface deformations on strike plate (OK to use unless craters with a depth of 1/8" or more exist)
- Wear and Tear on T-Posts (They will occasionally need replaced)

**XV.) Maintenance Considerations:**

<u>Component</u>	<u>What to look for</u>	<u>Maximum Threshold</u>	<u>Action Step</u>
Target Plate	Curve / Bending of Plate	Maximum of >3/16" across the face of the target plate. If the curve is 3/16" or greater, it is time to replace.	Replace the Target Plate if the curve is 3/16" or greater.
Target Plate	Pitting of Target Plate	1/8" Depth and / or 3/16" in diameter (Or both are present)	Replace Plates that are pitted
Target Plate	Cracking	If Cracks are present, the target plate must be replaced.	Replace Cracked Target Plates
1/4" AR500 T-Post Plates	Pitting or cratering of the 1/4" AR500 shields	1/8" Depth and / or 3/16" in diameter (Or both are present) OR if welds are cracking, leading to failures.	Retire and Replace AR500 T-Posts that are showing signs of damage from use.
Hardware	Hardware that is worn out and / or impacted by rifle rounds, etc.	If the hardware shows visible wear and tear from impacts and/or bullet fragmentation, replace the hardware	Replace any hardware that shows visible wear and tear.
Complete System	Chipped Paint and Rust	Keep your target system painted and touch it up at the end of each range session. This lengthens the life of the system.	Keep targets freshly painted to avoid rust and corrosion and to be able to track impacts accurately.

**XIV.) Warranty Considerations**

We stand behind our customers and products. Our product warranties vary, so please see our website for ALL warranty information. One thing to note: Our warranty DOES NOT COVER MISUSE, IMPROPER DISTANCES, IMPROPER AMMUNITION, AND NEGLIGENCE WHETHER ACCIDENTAL OR INTENTIONAL. For full warranty details, please see:

<https://tatargets.com/warranty/>

**XV.) Maintenance Considerations:**

Our target systems are serviceable. When used correctly, you should expect a long life of use. In the event that a component becomes damaged, discontinue use and replace. Replacement parts can be found on our website, or you can call or email us anytime to order replacement components.

**XVI.) Contact Us:**

If you have any other questions, please feel free to email our team and we'll be able to further assist you with setting up your new target system.

Customer Service Email: [info@tatargets.com](mailto:info@tatargets.com)

TA Targets

PO Box 212

Womelsdorf, PA 19567